

CONCRETE ANCHORS



5K REMOVABLE CONCRETE HOLE ANCHOR FS876

The 5K Removable Concrete Hole Anchor is an exclusive product sure to boost productivity by providing immediate anchor removal and instant user mobility. The anchor can be set without fear of getting stuck.

- Easy trigger allows for quick and repeated use
- Manufactured from stainless steel, zinc-plated steel
- 3/4" x 3" Drilled hole required for installation
- 10.75" Overall length
- Single user 130-310 lb. ANSI, 420 lbs. OSHA
- Minimum breaking strength 5,000 lbs.
- Meets ANSI Z359.1, ANSI A10.32, OSHA 1926.502



Retractor Handle



Easy Button™

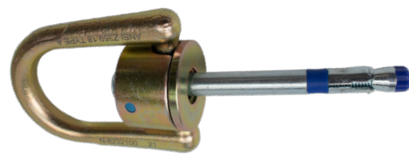


Chocks



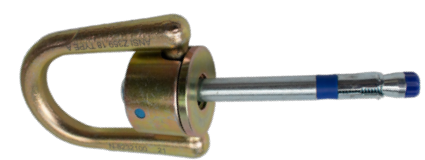
5K Removable Concrete Anchor 021-4050

- Reinforced connection point
- Used vertically and horizontally
- Made of high strength aluminum and steel
- Fits in 3/4" (19mm) concrete hole
- 10-1/4" Overall length
- Single user 130-310 lb. ANSI, 420 lbs. OSHA
- Minimum breaking strength 5,000 lbs.
- Meets ANSI Z359.18, OSHA 1926.502, 1910.66



10K Swivel Anchor & Concrete Wedge Bolt 021-4072

- 180° / 360° Rotating connection point
- 5/8" Expansion bolt with sleeve (concrete)
- Engineered for superior durability
- Installs quickly as a temporary or permanent anchor point
- Used vertically or horizontally
- Single user 130-310 lb. ANSI, 420 lbs. OSHA
- Minimum breaking strength 10,000 lbs.
- Meets ANSI Z359.18 Type A, OSHA 1926.502, 1910.66



5K Swivel Anchor & Concrete Wedge Bolt 021-4054

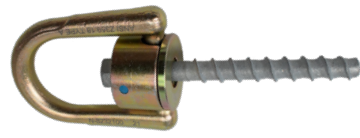
- 180° / 360° Rotating connection point
- 1/2" Expansion bolt with sleeve (concrete)
- Engineered for superior durability
- Installs quickly as a temporary or permanent anchor point
- Used vertically or horizontally
- Single user 130-310 lb. ANSI, 420 lbs. OSHA
- Minimum breaking strength 5,000 lbs.
- Meets ANSI Z359.18 Type A, OSHA 1926.502, 1910.66



5K Replacement Concrete Wedge Bolt 021-4057



10K Replacement Concrete Wedge Bolt 021-4073



5K Swivel Anchor & Concrete Bolt 021-4052

- 180° / 360° Rotating connection point
- Galvanized 1/2" x 6" concrete screw bolt
- Engineered for superior durability
- Installs quickly as a temporary or permanent anchor point
- Used vertically or horizontally
- Single user 130-310 lb. ANSI, 420 lbs. OSHA
- Minimum breaking strength 5,000 lbs.
- Meets ANSI Z359.18 Type A, OSHA 1926.502, 1910.66



Replacement Concrete Bolt 021-4053

7531

STEEL \ Trailing Beam Clamp

- Single Ratcheting; Fits 4" to 12" Flange Width; Machined Aluminum Bar; Steel Jaws with Slider Pads.



– 7531 4" to 12"

7530

STEEL \ Trailing Beam Clamp

- Dual Ratcheting for Centering on I-beam; Fits 4" to 14" Flange Width; Machined Aluminum Bar; Steel Jaws with Slider Pads.



– 7530 4" to 14"

7533

STEEL \ Trailing Beam Clamp

- Dual Adjustment for Centering on I-beam; Fits 3" to 13" Flange Width; Aluminum Hex Bar and Jaws.

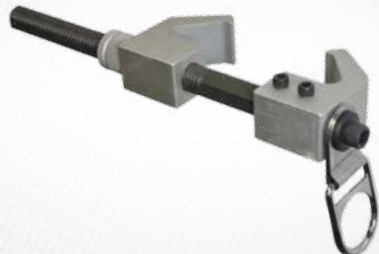


– 7533 3" to 13" – 7534 3" to 18"

7535

STEEL \ Stationary Beam Clamp

- Vertical or Horizontal Mount; Aluminum Hex Bar and Jaws; Fits 4" to 12" Flange Width; Can be used for FallTech Temporary HLLs; 8,000 lbs Capacity.



– 7535 4" to 12" – 7536 10" to 24"

7710

STEEL \ Beam Trolley

- Cast and Machined Aluminum and Steel Construction; Fits 6" to 12" Flange Width; For Temporary or Permanent Installations.

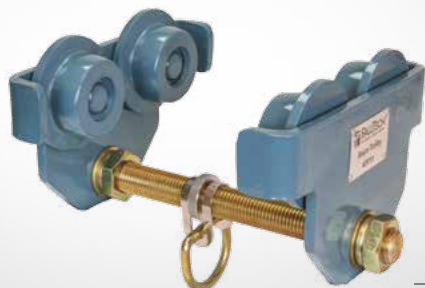


– 7710

7711

STEEL \ Heavy Duty Beam Trolley

- Steel Frame and Wheels; Fits Beam Flanges from 3" to 8" Wide and up to 1.25" Thick; Simple Adjustment with Common 2" Adjustable Wrench; For Temporary or Permanent Installations.



– 7711

7414

STEEL \ Bolt-on

- Forged D-ring and Bolt-on Plate; Provides Simple Overhead Anchorage Solution.



– 7414 2" x 4½ plate with 1/2" holes – 7414SS 2" x 4½ stainless steel plate with 1/2" holes

7414P

STEEL \ Weld-on

- Forged D-ring and Plain/Uncoated Steel Plate for Weld-on or Bolt-on Applications; Provides Simple Overhead Anchorage Solution.

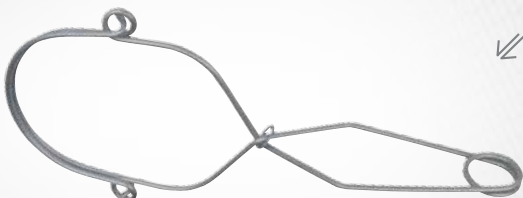


– 7414P 2" x 4½ plate with 1/2" holes

7407

STEEL \ Wire Form

- Stainless Steel Wire Form Temporary Anchor.



– 7407 4" to 5" Range of Fit
– 7402 2" to 3" Range of Fit
– 7403 3" to 4" Range of Fit

7435

STEEL \ Bolt-on

- Forged Alloy Steel Construction; Extra Large Ring Provides Compatibility with a Wide Range of Connectors; Bolt-on Design Provides Simple Overhead Anchorage Solution; Bolt size 9/16" Threaded Stud with Grade 8 Nut; 7/8" Max Substrate Thickness.



– 7435

7408

STEEL \ Grip Anchor

- Alloy Steel Grip Anchor for Temporary/Reusable Anchorage for up to 1¼" Flange Thickness; For Vertical or Horizontal Applications; 10,000 lbs Capacity.



– 7408



ROOFING

Made from quality materials and engineered for safety, FallTech's wide range of roof anchors are designed to be safe, easy to use and cost-effective.



Four steel mounting wings provide secure attachment to sheathing or trusses

Forged eye for attachment of HLL carabiner

Reusable and moveable for multiple applications

7432

ROOFING / TEMPORARY REUSABLE

7431

ROOFING \ Permanent

- Double D-ring; Permanent Roof Anchor with Stainless Steel Body; Fastens Under Shingles, Leaving D-rings Exposed for Attachment; 17" Including D-rings with 12" Nailing Surface.



- 7431
- 7431F with Nails

7434

ROOFING \ Permanent

- Single D-ring, Permanent Roof Anchor with Stainless Steel Body; Fastens Under Shingles, Leaving D-ring Exposed for Attachment; 19" Including D-ring with 17" Nailing Surface.



- 7434

7626

ROOFING \ Permanent

- Vertical Wall Anchor; Stainless Steel with Fasteners; Attaches to Top Plate and Truss or Rafter.



- 7626 Up to 7/12 Roof Pitch



- 7627 8/12 or Greater Roof Pitch

7432

ROOFING \ Temporary Reusable

- Dual Truss-mount Anchor for Horizontal Lifeline Use; Attaches to Sheathing or Trusses; Includes Lag Screws and U-bolts; Mounting Plates are 5" x 12" Each and 24" on Center for Roof Trusses.



- 7432

ROOFING \ Anchorage

7410

ROOFING \ Temporary Reusable

- Reusable, Hinged Roof Anchor with Heavy Duty D-ring; Includes Nails.



- 7410

7410M

ROOFING \ Temporary Reusable

- Reusable, Hinged Roof Anchor with Heavy Duty D-ring for Metal Roofs; Includes Screws.



- 7410M

744410

ROOFING \ Single Use/10pk

- Single-use Roof Anchor; with Nails.



- 744410 10 Pack w/ Nails
- 7444 Single

7433

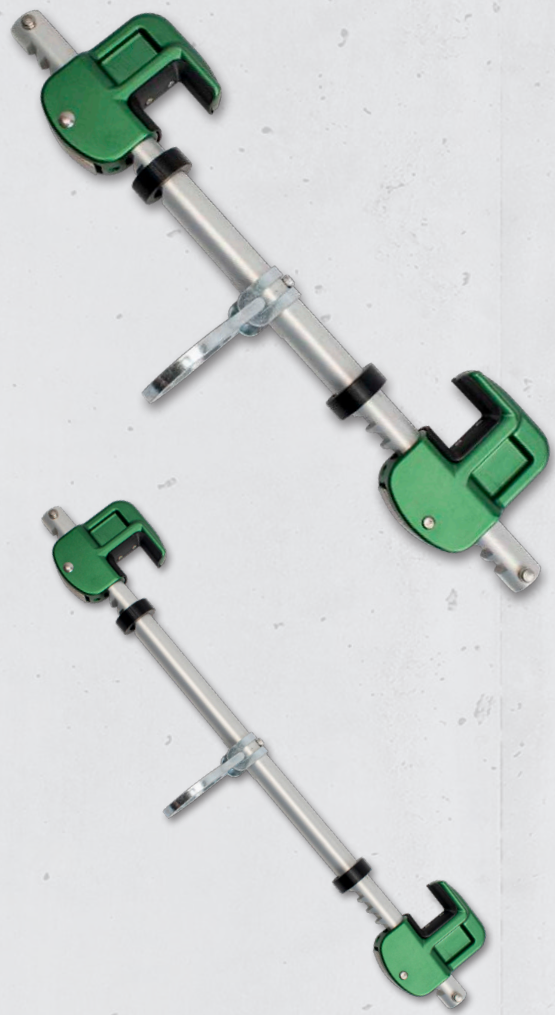
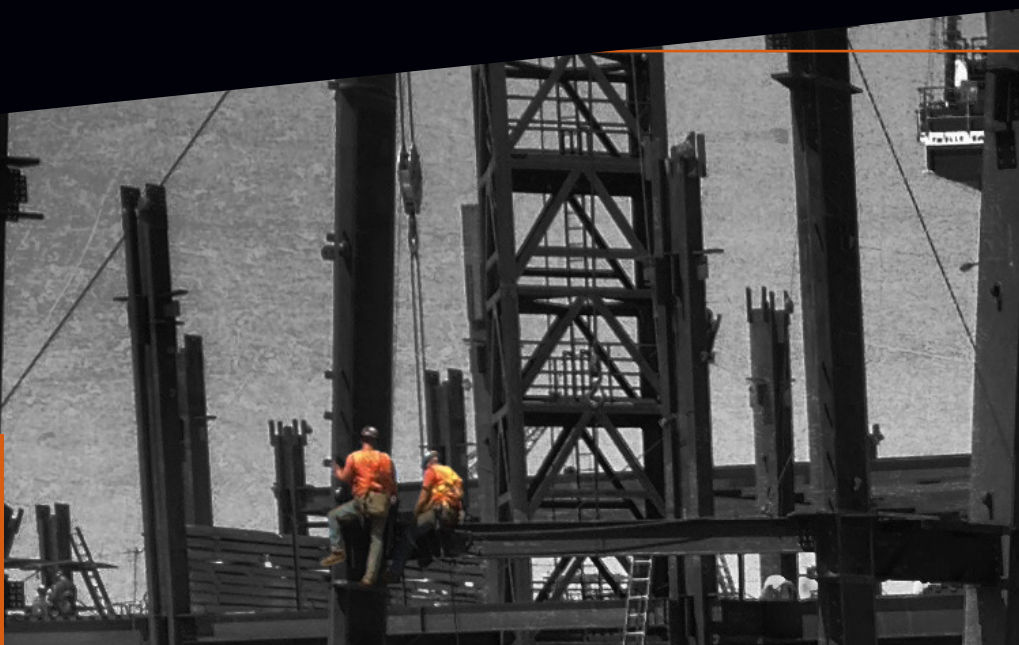
ROOFING \ Temporary Reusable

- EcoAnchor; 4' x 4' Water-filled Counter-weight Anchor; with Duffle Bag.



- 7433

STEEL ANCHORS



BEAM WALKER EASY SLIDER
021-4068

The Beam Walker Easy Slider offers hands-free mobility. This lightweight compact design is ideal for foot level tie-off trailing anchor applications.

- 180° Rotating connection point
- Nylon rollers for more effective slide
- Fits beams 3-1/2" to 14" with flanges up to 1-1/4"
- Lightweight aluminum construction
- Easy trigger allows for quick, repeated use
- Overall length 19.5"
- Single user 130-310 lb. ANSI, 420 lbs. OSHA
- Minimum breaking strength 5,000 lbs.
- Meets ANSI Z359.18, OSHA 1926.502, 1910.66



Beam Walker Easy Slider Sizes		
Part Number	Description	Length
021-4068	Beam Walker Easy Slider 3-1/2" - 14"	3-1/2" - 14" Beam
021-4069	Beam Walker Easy Slider 12" - 30"	12" - 30" Beam



Beam Trolley Anchor
018-4001

- Lightweight aluminum body
- Stainless steel rail guides
- Coated steel D-ring attachment point
- Abrasion, heat and chemical resistant nylon wheels
- Fits beam flange up to 1.75" thick
- Adjusts from 3.5"-14"
- Single user 130-310 lb. ANSI, 420 lbs. OSHA
- Minimum breaking strength 5,000 lbs.
- Meets ANSI Z359.1. OSHA 1926.502, CE 0321, EN 795:1996 (+A1:2000) Class B



Premier Sliding Beam Anchor
021-4055

- 360° Swiveling connection point
- Fits beams 4" to 13" with flanges up to 1-1/4"
- Lightweight aluminum construction
- Reinforced jaws for smoother sliding action
- Overall length 19.5"
- Single user 130-310 lb. ANSI, 420 lbs. OSHA
- Minimum breaking strength 5,000 lbs.
- Meets 1926-502, ANSI Z359.1



Vertical/Stationary Beam Anchor
019-4009

- Easy installation and use
- Lightweight aluminum construction
- Adjusts to fit beams from 3.5" to 14"
- Rotating connection point
- Single user 130-310 lb. ANSI, 420 lbs. OSHA
- Minimum breaking strength 5,000 lbs.
- Meets OSHA 1926.502, ANSI Z359.1



Sliding Beam Anchor
FS860

- Center positioning retainer prevents jamming on beam
- Fits beams 3.5" to 14" with flanges up to 1-1/4"
- Lightweight durable construction
- Overall length 19"
- Single user 130-310 lb. ANSI, 420 lbs. OSHA
- Minimum breaking strength 5,000 lbs.
- Meets OSHA 1926-502, ANSI Z359.1, ANSI A10.32

MULTI-PURPOSE

Built to meet the site-specific needs of various industries, FallTech multi-purpose anchors are designed for a wide variety of temporary and permanent applications.



Can be passed through multiple times to meet desired overhead height

1-3/4" 8,500 lbs load-bearing web

Fastens to overhead structural member by passing smaller D-ring through larger D-ring

3" wear pad webbing protects primary load-bearing web from cuts and abrasion

3 box stitches for superior strength

7336

MULTI-PURPOSE / PASS THROUGH

7336

MULTI-PURPOSE \ Pass Through

– Web Pass-through Anchor Sling with 2 D-rings and 3" Wear Pad.



- | | | | |
|----------|-----|----------|-----|
| – 7336 | 3' | – 7373 | 12' |
| – 7324 | 2' | – 737214 | 14' |
| – 7348 | 4' | – 737220 | 20' |
| – 7372 | 6' | – 737224 | 24' |
| – 737208 | 8' | – 737230 | 30' |
| – 737210 | 10' | – 737240 | 40' |

7236

MULTI-PURPOSE \ Web Choker

– Heavy-duty Web Choker with 1 D-ring.



- | | |
|----------|------------|
| – 7236 | 3' Length |
| – 7218 | 18" Length |
| – 7224 | 2' Length |
| – 722448 | 4' Length |
| – 7272 | 6' Length |

7236LT

MULTI-PURPOSE \ Web Choker

– Light-duty Web Choker with 1 D-ring.



- | | |
|----------|------------|
| – 7236LT | 3' Length |
| – 7224LT | 2' Length |
| – 7218LT | 18" Length |

MULTI-PURPOSE \ Anchorage

35

ANCHORAGE

7244

MULTI-PURPOSE \ WeldTech Choker

– WeldTech Kevlar® Choker with 1 D-ring.



- | | |
|--------|-----------|
| – 7244 | 6' Length |
| – 7245 | 3' Length |

72493FT

MULTI-PURPOSE \ Arc Flash Choker

– Arc Flash Kevlar® Choker with 1 Coated D-ring.



- | | |
|-----------|-----------|
| – 72493FT | 3' Length |
| – 72494FT | 4' Length |

7214

MULTI-PURPOSE \ Tower Choker

– 17" Web Tower Choker with D-ring.



- | | |
|--------|------------|
| – 7214 | 17" Length |
|--------|------------|